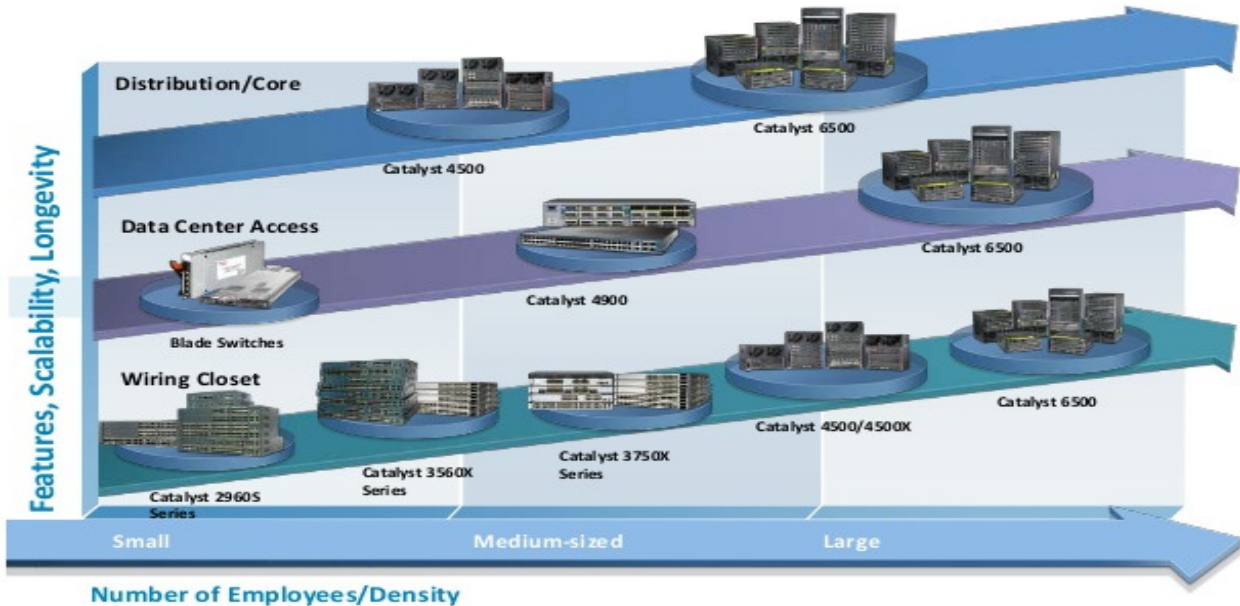


Catalyst Switching Portfolio



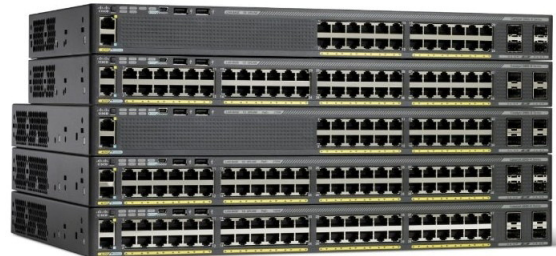
Cisco Switching Solutions

Cisco Switches deliver highly secure, reliable, and transparent solutions for networks of all sizes

- 1) Manage switches in the cloud
- 2) Simplify and scale virtual networking
- 3) Use network to strengthen security
- 4) Gain pervasive visibility into my infrastructure
- 5) Digitize Audio Video network
- 6) Get a platform for extreme industrial environments
- 7) Build carrier-class cloud services

Cisco Catalyst 2960-L Series Switches are fixed-configuration, Gigabit Ethernet switches that provide entry-level enterprise-class Layer 2 access for branch offices, conventional workspaces and out-of-wiring closet applications. Designed for operational simplicity to lower total cost of ownership, they enable secure, and energy-efficient business operations with a range of Cisco IOS Software features.

Cisco Catalyst 2960-X Series



Cisco Catalyst 2960-X Series





Cisco Catalyst 3850 Series Configurations

Models	Total 10/100/1000 or SFP or SFP+ Ports	Default AC Power Supply	Available PoE Power	StackWise-480	StackPower
WS-C3850-24T	24	350WAC	-	Yes	Yes
WS-C3850-48T	48				
WS-C3850-24P	24 PoE+	715WAC	435W		
WS-C3850-48P	48 PoE+				
WS-C3850-48F	48 PoE+	1100WAC	800W		
WS-C3850-24U	24 UPOE	1100WAC	800W		
WS-C3850-48U	48 UPOE	1100WAC	800W		
WS-C3850-24XU	24 UPOE (100Mbps/1/2.5/5/10 Gbps)	1100WAC	580W		
WS-C3850-12X48U	48 UPOE (with 12 100Mbps/1/2.5/5/10 Gbps Ports)	1100WAC	630W		

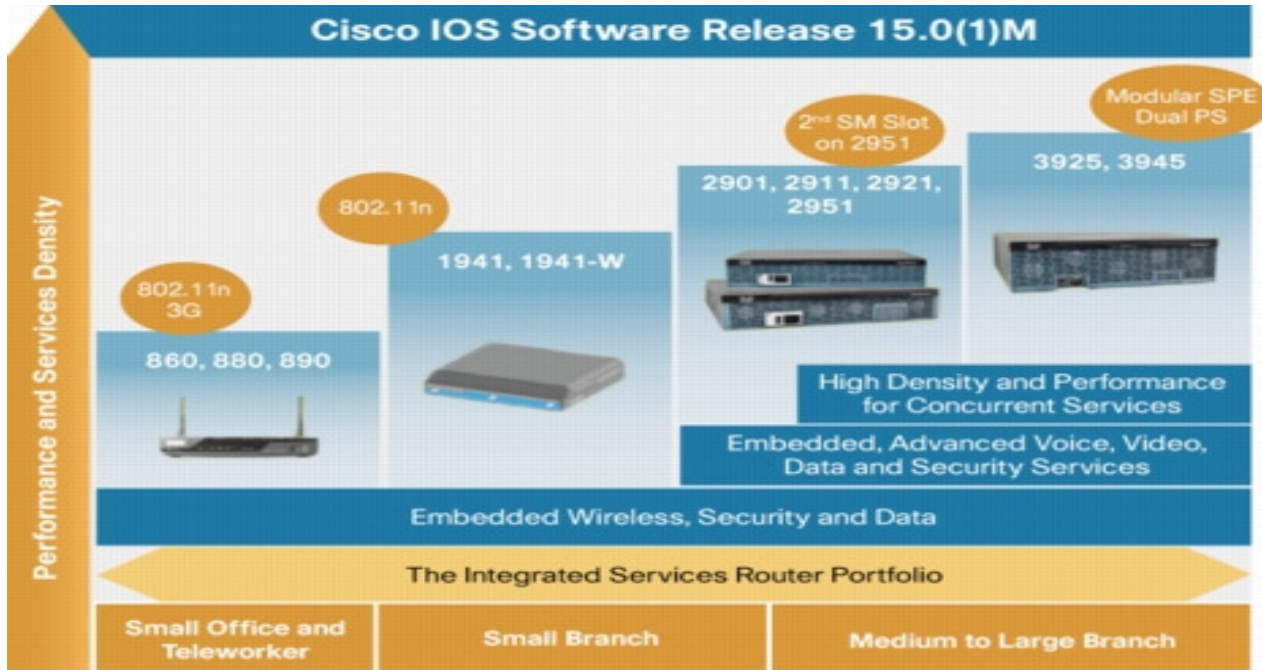
Cisco Catalyst 2960-X Series Configurations

Model	10/100/1000 Ethernet Ports	Uplink Interfaces	Cisco IOS Software Image	Available PoE Power	FlexStack-Plus Capability
Cisco Catalyst 2960X-48FPS-L	48	4 SFP	LAN Base	740W	Y
Cisco Catalyst 2960X-48LPS-L	48	4 SFP	LAN Base	370W	Y
Cisco Catalyst 2960X-24PS-L	24	4 SFP	LAN Base	370W	Y
Cisco Catalyst 2960X-24PSQ-L	24 (8PoE)	2 SFP, 2 10/100/1000BT	LAN Base	110W	-
Cisco Catalyst 2960X-48TS-L	48	4 SFP	LAN Base	-	Y
Cisco Catalyst 2960X-24TS-L	24	4 SFP	LAN Base	-	Y
Cisco Catalyst 2960X-48TS-LL	48	2 SFP	LAN Lite	-	-
Cisco Catalyst 2960X-24TS-LL	24	2 SFP	LAN Lite	-	-

Cisco Catalyst 2960-L Series Configurations

Product ID	10/100/1000 Ethernet Ports	Uplink Interfaces	Available PoE Power	Fanless	Dimensions (H x D x W)	Weight
WS-C2960L-8TS-LL	8	2 SFP	-	Y	1.73 x 8.45 x 10.56 in. (4.4 x 21.5 x 26.8 cm)	4.45 lb (2.02 kg)
WS-C2960L-8PS-LL	8	2 SFP	67W	Y	1.73 x 9.45 x 10.56 in. (4.4 x 24 x 26.8 cm)	5.64 lb (2.56 kg)
WS-C2960L-16TS-LL	16	2 SFP	-	Y	1.73 x 8.45 x 10.56 in. (4.4 x 21.5 x 26.8 cm)	4.53 lb (2.06 kg)
WS-C2960L-16PS-LL	16	2 SFP	120W	Y	1.73 x 9.45 x 10.56 in. (4.4 x 24 x 26.8 cm)	5.73 lb (2.6 kg)
WS-C2960L-24TS-LL	24	4 SFP	-	Y	1.73 x 9.45 x 17.5 in. (4.4 x 24 x 44.5 cm)	6.61 lb (3.0 kg)
WS-C2960L-24PS-LL	24	4 SFP	195W	Y	1.73 x 10.45 x 17.5 in. (4.4 x 26.5 x 44.5 cm)	7.63 lb (3.46 kg)
WS-C2960L-48TS-LL	48	4 SFP	-	Y	1.73 x 9.45 x 17.5 in. (4.4 x 24 x 44.5 cm)	7.21 lb (3.27 kg)
WS-C2960L-48PS-LL	48	4 SFP	370W	N	1.73 x 11.5 x 17.5 in. (4.4 x 29.2 x 44.5 cm)	10.25 lb (4.65 kg)

Please email or call us to request for a presentation



Features of Cisco Routers:

- 1) Agile application services – Application delivery assurance services support application visibility and control
- 2) WAN connectivity – Includes WLAN with 802.11a/g/n, T1/E1, T3/E3, 4G/LTE, xDSL, copper, and fiber Gigabit Ethernet
- 3) WAN optimization – Get support for router-integrated, on-demand WAN optimization and application acceleration through service modules
- 4) Highly integrated security – Get threat defense support through firewall and IPS options, and support for encryption and cloud-based security
- 5) Unified communications* - Offer a high quality analog and digital voice and video experience through on-board integrated digital signal processors and analog voice cards
- 6) Medianet services* - Gain a more visual, social and personal experience through video networking solutions for branch users and allow for control of media services through AVC
- 7) High Performance* - Can run multiple concurrent services offered in a scalable manner at high throughputs



Cisco 1921 & 1941 Router Series



Cisco 2911 & 2921 Router Series



Cisco 1941 Router Series

	Cisco1941, Cisco1941W
Services and Slot Density	
Embedded hardware-based crypto acceleration (IPSec)	Yes
Total Onboard Gigabit Ethernet 10/100/1000 WAN ports	2
RJ-45-Based Ports	2
SFP-Based Ports	0
SM Slots	0
Double-Wide SM Slots	0
EHWIC Slots	2
Double-wide EHWIC slots (use of a double-wide EHWIC slot will consume two EHWIC slots)	1
ISM Slots	1 (0 on the Cisco 1941W)
Memory (DDR2 Error Correction Code [ECC] ECC DRAM) - Default	512 MB
Memory (DDR2 ECC DRAM) - Maximum	2.0 GB
External USB flash memory slots (Type A)	2
USB Console Port (Type B) (up to 115.2 kbps)	1
Serial Console Port (up to 115.2 kbps)	1
Serial Auxiliary Port (up to 115.2 kbps)	1
Power Supply Options	AC, POE
Redundant Power Supply Support	No

Cisco 1921 Router Series

	Cisco 1921 Integrated Services Router
Services and Slot Density	
Embedded hardware-based cryptography acceleration (IPsec + SSL)	Yes
RJ-45 onboard LAN/WAN 10/100/1000 ports	2
EHWIC slots	2
Doublewide EHWIC slots (use of a doublewide EHWIC slot will consume 2 EHWIC slots)	1
Cisco Integrated Services Module (ISM) slots	0
Memory (DDR2 DRAM): Default/maximum	512 MB/512 MB
USB flash memory (internal): Default/maximum	256 MB/256 MB
External USB flash-memory slots (Type A)	1
USB console port (mini-Type B) (up to 115.2 kbps)	1
Serial console port (up to 115.2 kbps)	1
Serial auxiliary port (up to 115.2 kbps)	1
Integrated power supply	AC and DC power-supply models
Power-supply options	POE (external) - on AC models only
Redundant-power-supply support	No



Cisco 2900 Router Series

	Cisco 2901	Cisco 2911	Cisco 2921	Cisco 2951
Services and Slot Density				
Embedded Hardware-Based Cryptography and Acceleration	Yes	Yes	Yes	Yes
Cisco Unified SRST Sessions	35	50	100	250
Cisco Unified CCME Sessions	35	50	100	150
Total Onboard WAN 10/100/1000 Ports	2	3	3	3
RJ-45-Based Ports	2	3	3	3
SFP-Based Ports (use of SFP port disables the corresponding RJ-45 port)	0	0	1	1
Service Module Slots	0	1	1	2
Double-Wide Service Module Slots (use of a double-wide slot will occupy all single-wide service module slots in a 2900)	0	0	1	1
EHWIC Slots	4	4	4	4
Double-Wide EHWIC Slots (use of a double-wide EHWIC slot will consume two EHWIC slots)	2	2	2	2
ISM Slots	1	1	1	1
Onboard DSP (PVDM) Slots	2	2	3	3
Memory DDR2 ECC DRAM - Default	512 MB	512 MB	512 MB	512 MB
Memory (DDR2 ECC DRAM) - Maximum	2 GB	2 GB	2 GB	2 GB
Compact Flash (External) - Default	slot 0: 256 MB slot 1: none	slot 0: 256 MB slot 1: none	slot 0: 256 MB slot 1: none	slot 0: 256 MB slot 1: none
Compact Flash (External) - Maximum	slot 0: 4 GB slot 1: 4 GB	slot 0: 4 GB slot 1: 4 GB	slot 0: 4 GB slot 1: 4 GB	slot 0: 4 GB slot 1: 4 GB
External USB 2.0 Flash Memory Slots (Type A)	2	2	2	2